

Guideline for the Installation of Sleeper Pads on Timber Sleepers

1. Fastening of the sleeper pad

It is possible to fasten sleeper pads in various ways on to the timber sleepers. In the following document 2 possibilities are shown. Additionally it is also possible to glue the pads.

1.1 Staples

For the staples a minimum size is recommended to ensure a durable and proper fastening of the pad onto the timber sleeper.

To avoid effects of corrosion the staples should be made of stainless steel.

Recommended dimensions of the staples:

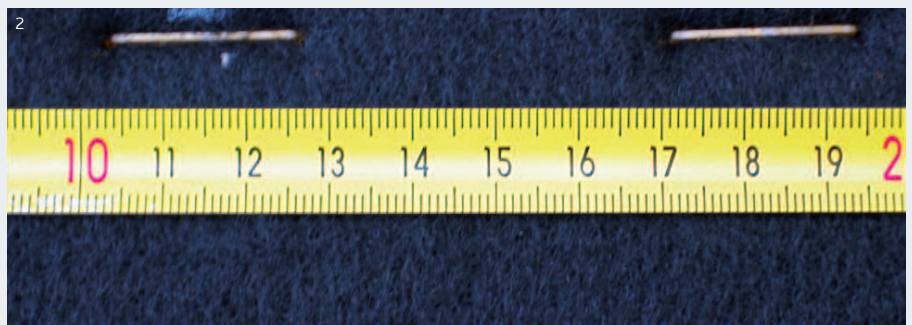
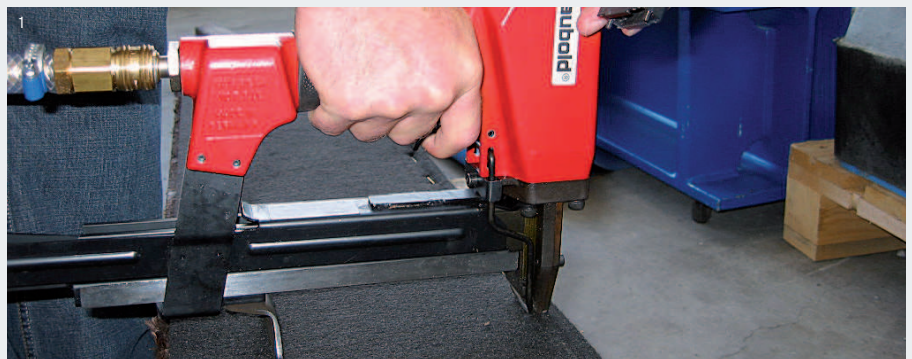
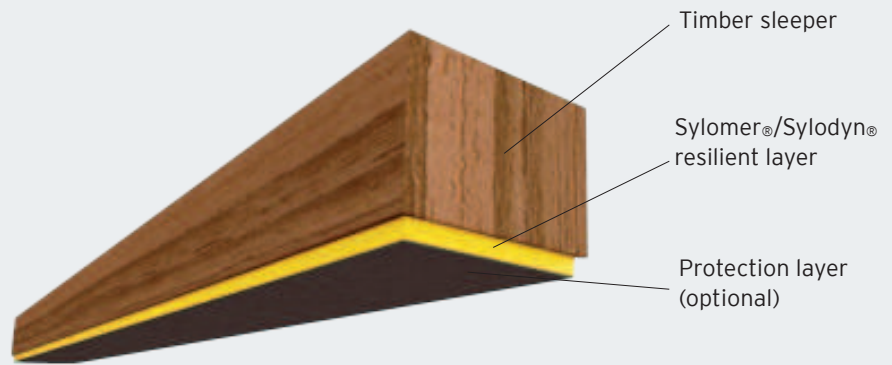
Width: 10 to 20 mm

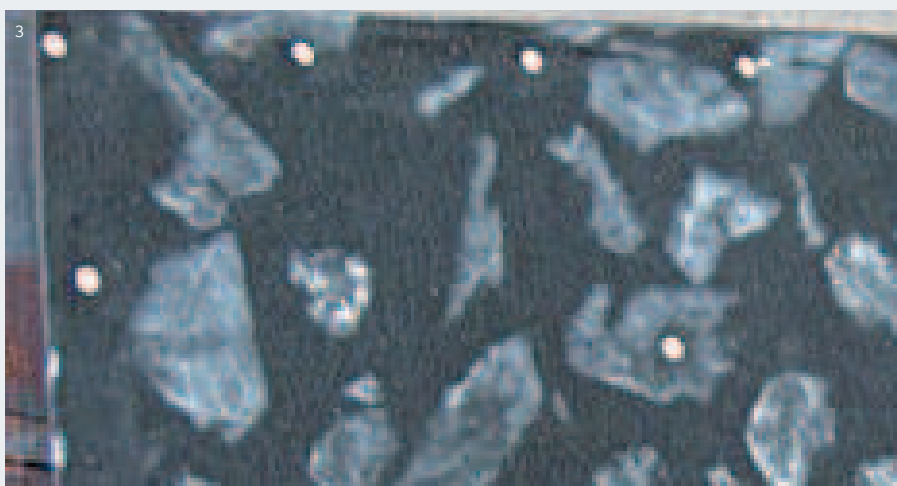
Length: 30 mm

Material: stainless steel

The following steps are necessary to connect the under sleeper pad onto the timber sleeper:

- 1 The staples can be applied using a conventional stapling device.
- 2 The staples should be placed with a spacing of 4 to 5 cm between each other and 1 cm from the edge of the pad.
- 3 The staples should be placed completely around the under sleeper pad.





1.2 Nails

A suitable alternative to the mentioned staples are nails. To avoid damage of the material and the protection layer, nails with large nail heads should be used.

Recommended minimum dimensions of the nails should be:

Nail head diameter: ≥ 5 mm
Length: ≥ 30 mm
Material: stainless

Driving the nails into the material has to be performed very carefully to ensure that the resilient layer is attached to the timber sleeper and not penetrated and damaged by the nails.

The following steps are necessary to connect the under sleeper pad onto the timber sleeper:

- 1 The nails can be applied using a conventional pneumatic nailing machine.
- 2 The nails should not be driven too far into the resilient layer to avoid damaging it. The spacing between the nails should not be more than 6 cm.
- 3 To ensure also a proper fixation of the under sleeper pad in the middle of the timber sleeper at least one additional line of nails should be applied throughout the length of the pad.

All information and data is based on our current knowledge. Further information can be found in our actual under sleeper pad brochure.